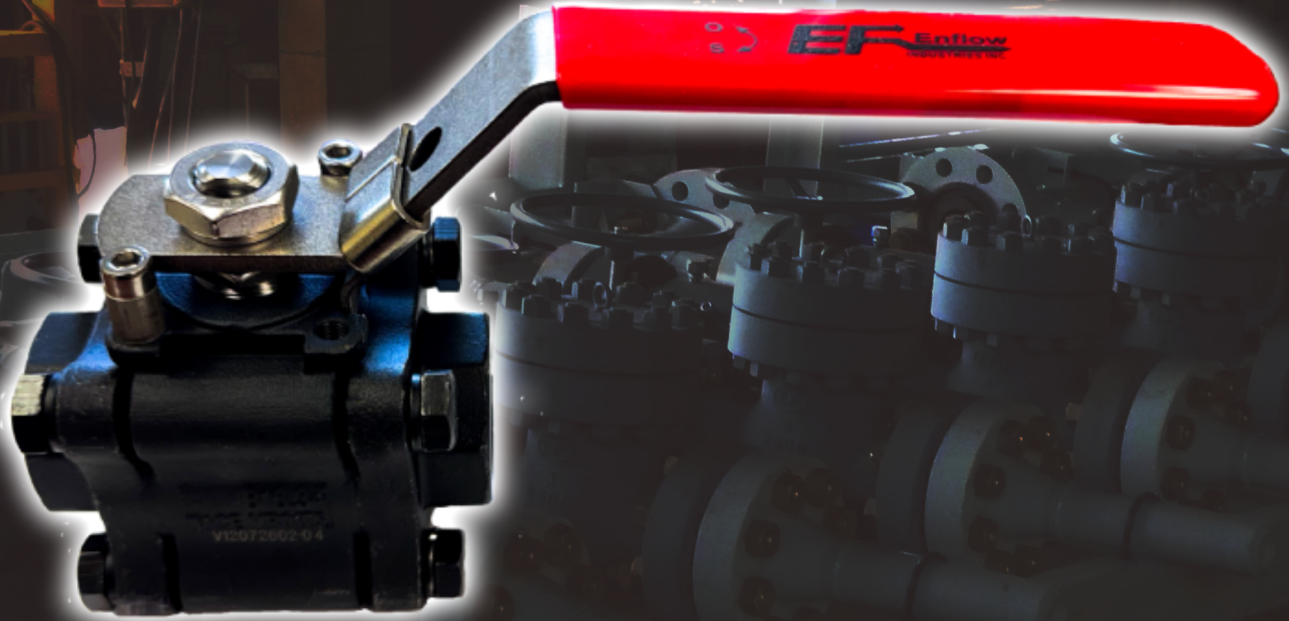


Bar Stock Ball Valve

Series E3

3 Piece Bolted Body



Design/Features:

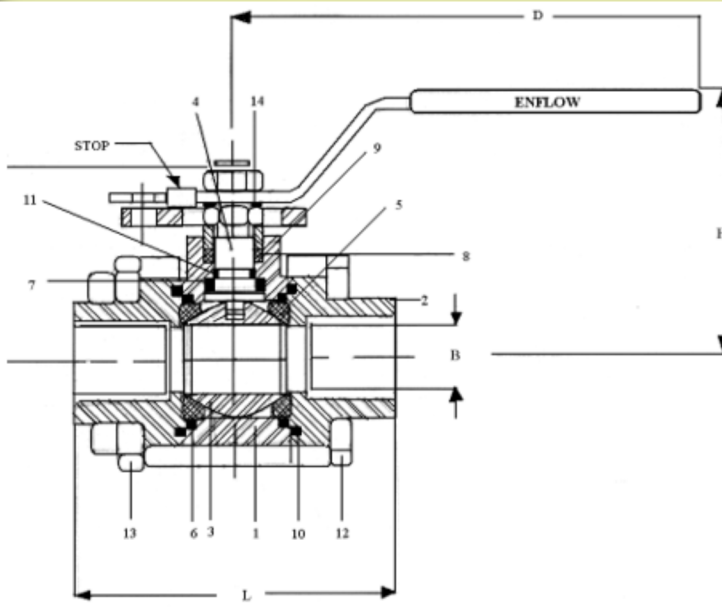
Size Range: 1/4" to 2"

- 2000 WOG, NPT, SW, SW X NPT
- ANSI B16.34 Wall Thickness
- Meets API 608
- ASME B1.20.1 NPT Threads
- In Line Repairable
- Meets NACE MR0175
- Blow Out Proof Stem
- ISO 5211 Mounting Pad
- Locking Device
- Adjustable Packing
- LCC and CF8M Materials
- Tested to API 598

1423 - 45 Avenue NE
Calgary, Alberta, Canada
T2E 2P3

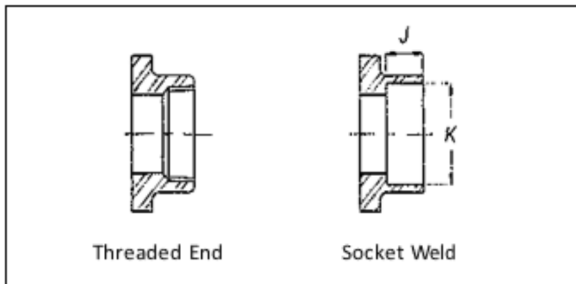
(403) 266-4977
sales@enflow.ca
www.enflow.ca





Standard Materials

Item No.	Part Name	Material
1	Body	LCC, CF8M
2	Seat Retainer	LCC, CF8M
3	Ball	ASTM A182 F316
4	Stem	ASTM A182 F316
5	Seat	TFM (PTFE)
6	Gasket	PTFE
7	Stem Seal	PTFE
8	Packing	Graphite
9	Packing Ring	Stainless Steel
10	Gasket	Graphite
11	O-Ring	HNBR, Viton
12	Bolt	L7M / 8M
13	Nut	7M / Gr.8
14	Lock Washer	Stainless Steel



Torques and CV

Size	Full Port		Reg. Port	
	Torque	CV	Torque	CV
1/4"	35	8.0	35	8.0
3/8"	35	8.0	35	8.0
1/2"	60	21.0	35	8.0
3/4"	120	28.0	60	21.0
1"	180	45.5	110	28.0
1 1/4"	210	73.0	180	45.5
1 1/2"	240	102.0	210	73.0
2"	350	200.0	340	102.0

Dimensions and Weight

Size	Unit	Full Port							Net Wt.	Reg. Port							Net Wt.
		B	L	Y	H	D	K	J		B	L	Y	H	D	K	J	
1/4"	in.	0.39	2.48	1.49	2.36	5.05	0.56	0.44	0.08	0.39	2.48	1.49	2.36	5.05	0.55	0.44	0.8
8	mm	10	63	38	60	128	14.1	11.18		10	63	38	60	128	14.1	11.18	
3/8"	in.	0.39	2.48	1.49	2.36	5.08	0.69	0.44	0.8	0.39	2.48	1.49	2.36	5.05	0.69	0.44	0.8
10	mm	10	63	38	60	128	17.52	11.18		10	63	38	60	128	17.52	11.18	
1/2"	in.	0.5	2.52	1.89	2.67	5.25	0.85	0.44	0.9	0.5	2.52	1.89	2.67	4.96	0.85	0.44	0.9
15	mm	12.7	64	48	68	133	21.72	11.18		12.7	64	38	68	126	21.72	11.18	
3/4"	in.	0.75	3.74	2.36	3.15	5.47	1.06	0.56	1.8	0.5	2.75	1.81	2.56	4.96	1.06	0.56	1
20	mm	19.1	95	60	80	139	27.05	14.22		12.7	70	46	65	126	27.05	14.22	
1"	in.	1	4	2.67	3.35	5.51	1.33	0.72	2.1	0.75	3.74	2.36	3.15	5.82	1.33	0.72	2
25	mm	25.4	102	68	85	140	33.78	18.29		19	95	60	80	148	33.78	18.29	
1 1/2"	in.	1.5	5.07	4.09	4.33	7.48	1.91	0.72	4.5	1.26	4.52	3.31	3.78	7.48	1.91	0.72	3.8
40	mm	38.1	129	111	110	190	48.64	18.29		32	115	84	96	190	48.64	18.29	
2"	in.	2	5.51	4.09	4.92	7.87	2.4	0.84	6.5	1.5	4.92	3.58	4.33	7.48	2.4	0.84	4.9
50	mm	50.8	140	104	125	200	61.11	21.33		38.1	125	91	110	190	61.11	21.33	

1423 - 45 Avenue NE
 Calgary, Alberta, Canada
 T2E 2P3



(403) 266-4977
 sales@enflow.ca
 www.enflow.ca